

CERG NEWSLETTER Q3 2024

Cross-Company Christian Employee Group Newsletter!



**Cross-Company CERG
Thanksgiving & Praise
Experience!**

November 27, 10am Central (US)

Looking for 8 CERGs help lead.
Planning discussions start in
September. Reply if interested.



CERG
Christian Employee
Resource Group

What is this newsletter?

- Quarterly email newsletter
- Focuses on Christian employee group news/activities in corporations
- Focuses on the Christian connections between faith and work
- Shares cross-company CERG events/news
- Information shared by you all directly, or shared on LinkedIn
- Only PUBLIC information, no company internal information
- Company names, not logos, can use your CERG logo if you allow
- Only uses first names, and doesn't include contact info unless expressly asked to do so
- Open to anyone, people can add/remove themselves from the list by contacting Lucas
- Content grounded in Bible based Christianity with a focus on Jesus!

Target Christian Network hosts its 2nd Annual **Living Faith @ Work** Conference! So cool to be inspired by 16 Twin Cities companies that are leading the way on what it looks like to authentically live out our faith in the workplace! Best Buy, Target, Boston Scientific, General Mills, 3M, Cargill, and more. [See story here.](#)



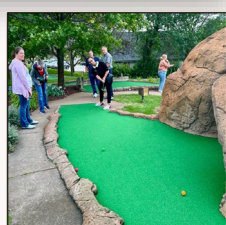
What's Happening Lately in CERGs

CERG Leader Connection Groups

Please nominate a leader or two from your CERG to join one or both of these cross-company CERG calls monthly.

- 1) First Friday – 1pm central – coordinated by [Faith and Work Movement](#), [sign up link](#).
- 2) Third Friday – 11am central – coordinated by CERG leaders going for 10 years, [sign up link](#).
- 3) [LinkedIn Group for CERGs](#)

Accenture CERG hosts talk around: [Listening to the Voice of God @ Work](#). God hears our prayers for wisdom and guidance in all areas of life, including work. Attendees learned how to recognize God's voice, how to practice listening prayer, and how to discern God's guidance for themselves.



CERGs are about Christian community, building up the body of Christ through caring about each other, worshiping God, and also... fun! Pictured is a GE HealthCare CERG mini-golf and ice cream social.

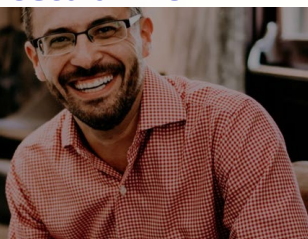
Exxon Mobil CERG hosts:

"The Sacredness of Secular Work"

August 8th 11:00am-12:00pm CST
Hosted by: Christian Community at ExxonMobil
Register at [CCEMHC.com](#)

Your work matters for eternity.

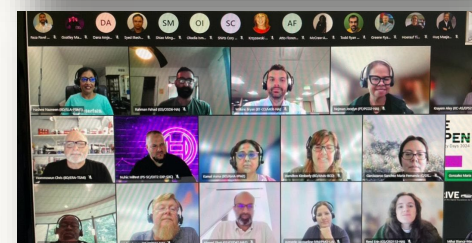
I'm here to help you see how and what to do about it.



Did you know that Exxon Mobil CERG has a public Website?! Very cool – check it out here: <https://www.ccemhc.com/>. Their mission is to: Connecting and encouraging Christians to confidently live out their faith in the workplace.” The Christian Community at ExxonMobil provides Christians in the workplace an opportunity to meet, communicate, and build relationships. CCEM serves as a central repository for faith-based activities that occur in and outside of work. They recently hosted author Jordan to talk about ‘The Sacredness of Secular Work.’ Very cool!

Bosch Hosts Interfaith Event re: Holidays

“So far 3 Interfaith Talk were completed to share faith-based holidays from Islam and Christianity. Tonight for colleagues in Asia, we will share about “Wealth Management with Faith Perspectives”, also tomorrow for colleagues in the western regions.” [Link for full story](#).



Annual Faith ERG Conference Happened In May!

Dare2Overcome Conference Highlights

Faith employee group members and leaders gathered to share best practices, data, and encouragement. [Thanks RFBF!](#) Each CERG is striving to make a positive impact on their company, its employees, and local communities! (Intel on the right pic sharing about their Faith ERGs)



See related LinkedIn posts from:

- [American Airlines](#)
- [ServiceNow](#)
- [Accenture](#)
 - [Dell](#)
- [Coke Consolidated](#)
 - [Bosch](#)
 - [BMC](#)
 - [KPMG](#)
 - [Google](#)

All4Jesus! Above is a picture of Christian ERG leaders from ServiceNow, Meijer, Ford, American Airlines, GE HealthCare, Coke Consolidated, AIG, KPMG, Dell, SAP, BMC, Bosch, Northrup Grumman, American Express, GE Aerospace, Intel, Amazon & more!

See all the sessions here!

Topics included:

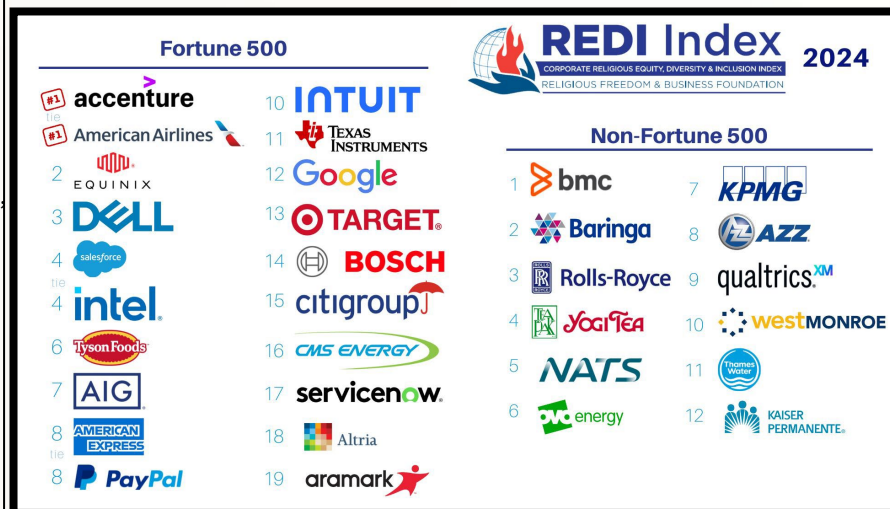
- Business Impact of Faith ERGs
- Benefits of Religious Inclusion
- Spiritual Resources Increase Health
- Religious Freedom Promotes Innovation
- Latest Data on Faith & Work



Key Findings Among Top Faith-Friendly Companies

- 94% featured religion on company's main or other diversity page
- 97% sponsor faith and belief employee resource groups
- 94% share best practices with other companies or organizations
- 94% clearly address religion in diversity training
- 87% provide chaplains or other spiritual care for employees
- 94% are attentive to how religion impacts stakeholders
- 94% communicate accommodation policies for employee religious needs
- 91% annually announce procedures for reporting religious discrimination
- 100% report that their employees attend religious diversity professional conferences
- 72% match employee donations to religious charities
- 100% equitably celebrate or honor holy days of their employees, involving thousands

Top Faith Friendly Companies, 2024



Learn more at: <https://religiousfreedomandbusiness.org/redi-index-2024>



Daimler and Mercedes Benz CERG hosting European CERG event in Germany with Livestream on Sat, Nov 16

Details at their [public website: event info here.](#)

Transform Work hosting a Multi Faith Discussion

[Transform Work](#) is another organization supporting CERGs! They have a [database of CERGs](#), and information about [how to start CERGs](#). They believe in *“Transforming work and workplaces through Christians empowered to live out their faith in word and action.”*

Here is one of their upcoming events: around Multi-Faith initiatives. September 25, afternoon UK Time. Info and registration [link here.](#)



DETROIT-AREA WORKPLACE CHRISTIAN SUMMIT – OCTOBER 26

If you are near the Detroit Area, several companies are working together to host a Faith @ Work Summit. If interested, reach out and we'll get you connected with the details.

Other city-based faith @ work CERG networks exist. If you are in these cities, feel free to reach out and we'll connect you with the right folks:

Austin TX, Chicago IL, Bay Area CA, Seattle WA, London UK, Singapore, Dublin IL, Milwaukee WI, Twin Cities MN, New York NY.

Q3 & Q4, Upcoming CERG Events and News

Faith & Work Movement Events

[Faith and Work Movement](#) partners with CERGs like Amazon, Bosch, Microsoft, Google, and others to host various faith @ work events. Events [listed here](#), [sign up here](#). Next one is on Spiritual Intelligence!



Planning for 2025 in your Christian ERG? Remember that it should be for God's glory, following God's will, and in God's timing!



Wellness programs at our companies should include a spiritual component, [this video](#) and other research discusses why. Purpose, meaning, peace, and prayer. Powerful things Christianity gives us in our work.

Companies with CERG Employee Groups – do you know of any others? Let us know!

• AAA	• Clorox	Revenue Service	• RGP	• 3M*	• JP Morgan Chase*
• Accenture	• Consumers Energy	• IQVIA	• Salesforce	• airbnb*	• KeHE*
• Aetna	• Crowley	• Jaguar Land Rover	• SAP	• Astellas*	• LinkedIn*
• AIG	• CVS	• JM Smucker	• Sanofi	• Amazon*	• Merrill Lynch*
• Altria	• Dell	• KPMG	• Scottsdale, AZ (City)	• Bank of America*	• Microsoft*
• American Airlines	• Deloitte	• Lexmark	• Securian	• Best Buy*	• Milwaukee Tool*
• American Express	• Disney	• Medtronic	• ServiceNow	• Boston Scientific*	• Morgan Stanley*
• Ameriprise Financial	• Dolby	• Meijer	• Spotify	• Broadcom (inc. VMware)*	• Northrup Grumman*
• Apple	• Equinix	• Merk	• Square	• Capital One*	• Oracle*
• Aramark	• EY	• Meta / Facebook	• Target	• Cargill*	• P&G*
• AT&T	• Fannie Mae	• McKinsey	• Texas	• Coca-Cola*	• Pfizer*
• Blue Cross/Blue Shield	• FINRA	• Netflix	• Toyota	• Daimler*	• Protiviti*
• BMC Software	• Ford	• NextDoor	• Uber	• Exxon Mobil*	• Raymond James*
• BNP Paribas	• GE Aerospace	• Nissan	• UBS	• General Mills*	• Roche (inc. Genentech)*
• Bosch	• GE HealthCare	• Paypal	• USDA Forest Service	• GSK*	• Thomson Reuters*
• British Telecom	• Goldman Sachs	• Phoenix, AZ (City)	• US Dept of State	• Hewlett Packard Enterprise*	• Travelers Insurance*
• CBRE	• Google	• PwC	• Walmart	• Honda*	• UnitedHealthcare*
• Citi Group	• Grainger	• Rockwell Automation	• X (Twitter)	• Jackson Financial*	
• Cisco	• Intel	• Rolls Royce	• XpertHR	• J.B. Hunt*	
	• Intuit		• Zurich Insurance		
	• IRS – Internal				