

# CERG NEWSLETTER Q2 2026

*Cross-Company Christian Employee Group Newsletter!*

## Cross Company CERG Events Abound this Quarter!

Dare2Overcome Multi-Faith ERG  
Conference just wrapped up (see page 3)

Faith and Work Movement Midwest CERG  
Retreat this weekend by Lake Michigan

Milwaukee cross-CERG picnic June 3

Minneapolis Living Faith @ Work cross-  
CERG event on June 12 (see page 4)

Cincinnati mega Faith and Work Summit  
June 17-19 (see page 2)

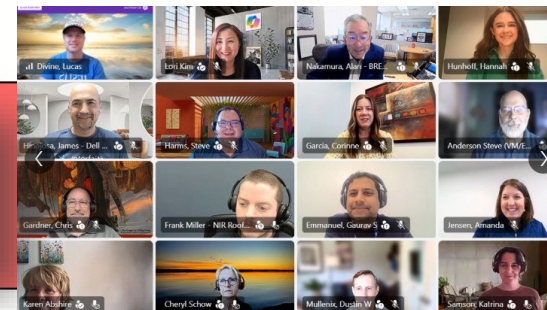


**CERG**  
Christian Employee  
Resource Group

## What is this newsletter?

- Quarterly email newsletter
- Focuses on Christian employee group news/activities in corporations
- Focuses on the Christian connections between faith and work
- Shares cross-company CERG events/news
- Information shared by you all directly, or shared on LinkedIn
- Only PUBLIC information, no company internal information
- Company names, not logos, can use your CERG logo if you allow
- Only uses first names, and doesn't include contact info unless expressly asked to do so
- Open to anyone, people can add/remove themselves from the list by contacting Lucas
- Content grounded in Bible based Christianity with a focus on Jesus!

960 folks joined the cross-company Christian  
National Day of Prayer event! Included Christians  
from Medtronic, GE, Intel, KPMG, Microsoft,  
Best Buy, Amazon, Boston Scientific, and more!  
[See link here.](#)



## Cross-Company CERG Events and Calls

### CERG Leader Cross-Company Meetings Monthly!

Please nominate a leader or two from your CERG to join one or more of these cross-company CERG calls monthly.

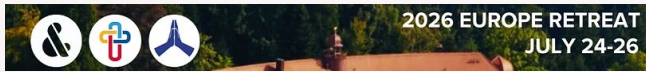
- 1) First Friday – 1pm central – coordinated by [Faith and Work Movement](#), [sign up link](#).
- 2) Third Friday – 11am central – coordinated by CERG leaders going for 10 years, [sign up link](#).
- 3) Third Thursday – 6:30am central (Europe lunchtime) – European CERG leaders and open to all – coordinated by Transform work, find the [CWG Development Level 5/6 lunchtime meeting here](#)

### Meijer Christian Employee Resource Group Hosts author Jordan Raynor

[Jordan spoke to the Christian community](#) about “the Sacredness of Secular Work.” He gave passionate and insightful tips for living the Christian faith in the workplace, speaking biblical truth to the attendees and reminding them their work matters to God!



### Upcoming European Retreat for CERG Leaders



Thanks to Christians at Daimler and Benz CERG along with Faith and Work Movement, Christian ERG leaders in Europe are gathering in Germany July 24-26 to grow in faith, meet other leaders and strengthen CERG connections, and reignite a passion for Christian faith @ work! [See details here](#). Please share with your European CERG folks.

### Faith and Belief MBA Case Competition supported by Walmart Faith Network among others



In Q1, BYU hosted it’s annual Faith and Belief MBA Case competition, and the faith ERGs of Walmart, Accenture, PWC, Tyson Foods, Ford, and Coke Consolidated supported the event around how AI impacts culture, faith, and work.

Don’t forget about the multi-industry **Christian Faith @ Work Summit** in June in Cincinnati, [see link here](#)

If you are looking for the back issues of this newsletter, you can find them at: <https://courageousthird.org/toolkit/>

← [CERG: Christian ERG Newsletter: Quarterly](#)

Each quarter, a newsletter goes out sharing public news about happenings in Christian employee groups. If you would like to join the mailing list, reach out and let us know! Here are the back issues going back to 2023.

[Q3-2025](#), [Q2-2025](#), [Q1-2025](#), [Q4-2024](#), [Q3-2024](#), [Q2-2024](#), [Q1-2024](#), [Q4-2023](#), [Q3-2023](#), [Q2-2023](#), [Q1-2023](#)

## Updates from Multi-Faith ERG Conference in May – Dare2Overcome



### Event Highlights



Key posts and seminars from the conference:

- [Merck highlighted as a faith-friendly company in the biopharmaceutical sector](#), over 3000 folks involved, faith pillars
- Imagine if corporations aligned values with faith-based values: love, justice, human dignity, compassion, selfless service.
- [We can't simply leave our faith and beliefs at the door.](#)
- Specific ways to implement faith connections on your local teams and person conversations.

### Accenture #1 Faith Friendly Company

**Accenture** has been ranked as the #1 most faith friendly company [globally on the REDI Index](#) for the fifth consecutive year! Over 3000 in Accenture's faith specific subgroups.



Atheist, Buddhist, Bahai, Christian, Hindu, Jewish, Muslim, Sikh

### Ways a company can become more faith friendly

 1. Religion (incl. faith and belief) is featured on company's web page	 5. Company provides spiritual care and/or chaplaincy services	 9. Employees attend related professional conferences
 2. Company sponsors faith and belief employee resource groups (ERGs)	 6. Attentive to how religion impacts stakeholders	 10. Company matches employee donations to religious charities
 3. Company shares best practices with other companies	 7. Accommodates religious needs of employees	 11. Company celebrates or honors holy days of their employees
 4. Religion is clearly addressed in HR training	 8. Clear procedures for reporting discrimination	 * Other ways company promotes religious belonging

### Faith ERG Leader of the Year – Lorna Coury

Some aspects of a great [Faith ERG leader](#) from [the article](#):

- Provide meaningful opportunities for faith connection, education, and celebration
- Initiatives such as interfaith learning sessions, leadership outreach, prayer and meditation spaces, and celebrations
- Creating a safe space and positive experience where folks want to lean into the group, growing to 500 in 3 years



## CERG Happenings

### Target Christian Network highlights God's Promise of Redemption in their Easter Event

You can sign up for their [Living Faith @ Work Conference](#) Fri, June 12<sup>th</sup> 8AM-3PM in Minneapolis



### EY Hosts Faith@Work Summit 2026 as UK Leaders Tackle AI, Ethics & Future of Work



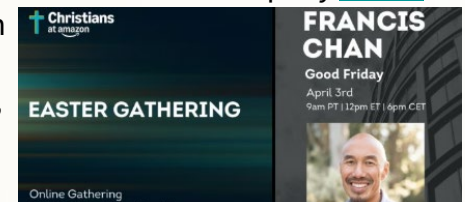
From Douglas: “20 years ago, we set up the EY Christian Community, prior to EY Embrace, EY’s Faith & Belief Network being set up. It was a different landscape then for us and other faith communities. We can now proudly say that EY is the most faith-friendly workplace among the Big Four! [Another post.](#)”

### Rapid Fire Updates

- **Texas Instruments** CERG highlighted as 25 years old now! To support employees in living their faith, TI offers time-off flexibility around religious holidays and serenity rooms for prayers or worship.
- **Oracle** CERG hosts event in May on “AI, Humanity, and the Question of God”.



- **Accenture** CERG hosts DC event celebrating women in the Bible. Another hub [packed blessing bags to love others!](#)
- **Christians at Daimler and Benz (CDB)** is an international CERG that has over 1,800 members and more than 50 prayer groups at Daimler Truck and Mercedes-Benz locations worldwide. It is committed to ensuring that Christian values are visible in personal working life within the company and in social responsibility outside the company.
- **Amazon** CERG hosts highly-attended cross-company [Easter Gathering](#) with Francis Chan
- **Coca-Cola** CERG is growing, with morning prayer and regular Bible Studies



## Companies with Christian Employee Groups – do you know of any others? Let us know!

• AAA	• Clorox	• Intuit	• Automation	• X (Twitter)	• Honda*
• Accenture	• Consumers Energy	• IRS – Internal Revenue Service	• Rolls Royce	• XpertHR	• Jackson Financial*
• Aetna	• Crowley	• IQVIA	• RGP	• Zurich Insurance	• J.B. Hunt*
• AIG	• CVS	• Jaguar Land Rover	• Salesforce	• 3M*	• JP Morgan Chase*
• Altria	• Dell	• JM Smucker	• SAP	• airbnb*	• KeHE*
• American Airlines	• Deloitte	• KPMG	• Sanofi	• Astellas*	• LinkedIn*
• American Express	• Disney	• Lexmark	• Scottsdale, AZ (City)	• Amazon*	• Mercedes-Benz*
• Ameriprise Financial	• Dolby	• Medtronic	• Securian	• Bank of America*	• Merrill Lynch*
• Apple	• doTERRA	• Meijer	• ServiceNow	• Best Buy*	• Northrup Grumman*
• Aramark	• E.ON	• Merck	• SolaSec	• Boston Scientific*	• Oracle*
• AT&T	• Epiq	• Meta / Facebook	• Spotify	• Broadcom (inc. VMware)*	• P&G*
• Aviva	• Equinix	• McKinsey	• Square	• Capital One*	• Pfizer*
• Blue Cross/Blue Shield	• EY	• Microsoft	• SSOE	• Cargill*	• Raymond James*
• BMC Software	• Fannie Mae	• Morgan Stanley	• Target	• C.H Robinson*	• Roche (inc. Genentech)*
• BNP Paribas	• FINRA	• Netflix	• Texas	• Coca-Cola*	• Thomson Reuters*
• Bosch	• Ford	• NextDoor	• Toyota	• Daimler*	• Travelers Insurance*
• British Telecom	• GE Aerospace	• Nissan	• Uber	• Exxon Mobil*	• United Healthcare*
• Capital Group	• GE HealthCare	• Paypal	• UBS	• General Mills*	• United Rentals*
• CBRE	• Goldman Sachs	• PEM	• USDA Forest Service	• GE Vernova*	
• Citi Group	• Google	• Phoenix, AZ (City)	• US Dept of State	• GSK*	
• Cisco	• Grainger	• PwC	• Walmart	• Hewlett Packard Enterprise*	
	• Intel	• Rockwell			